

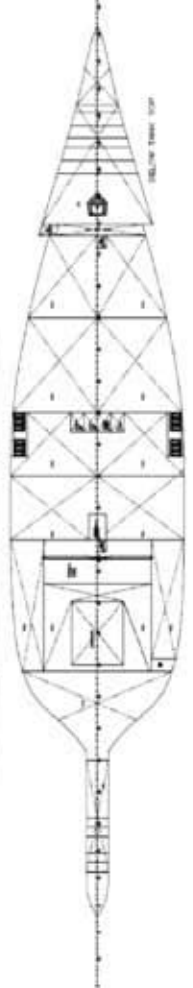
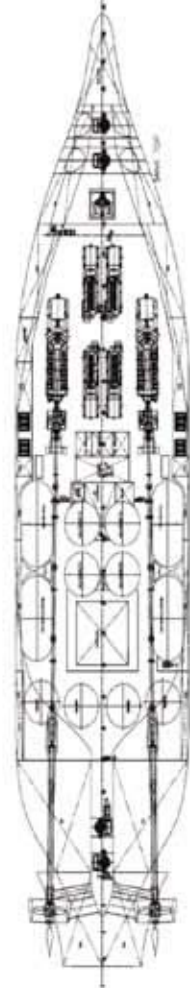
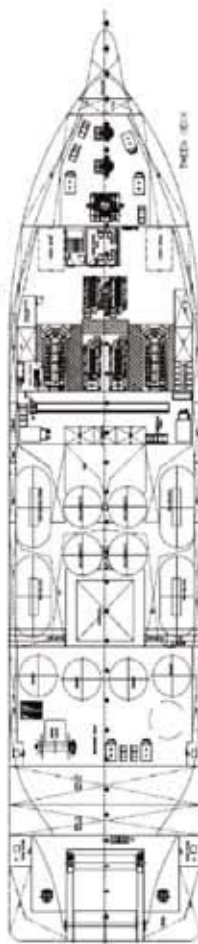
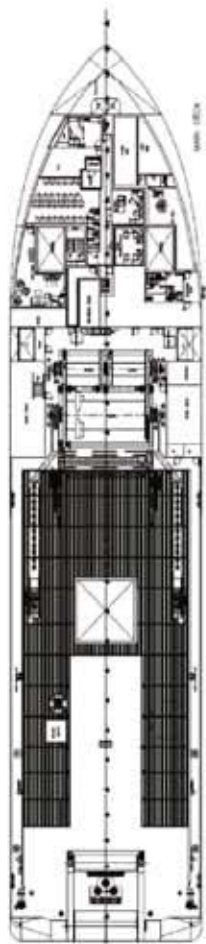
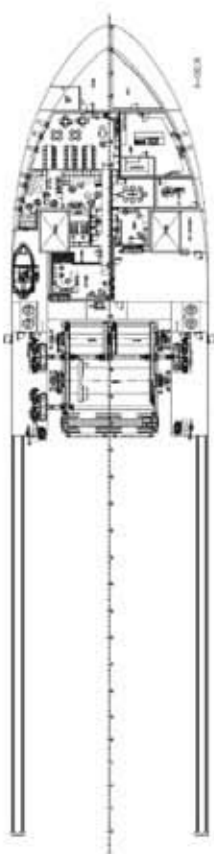
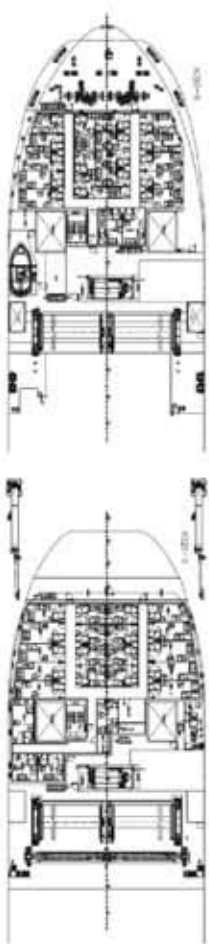
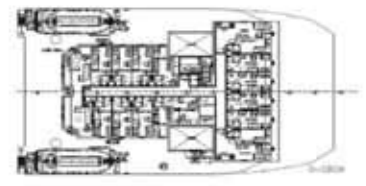
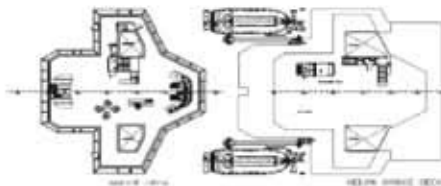
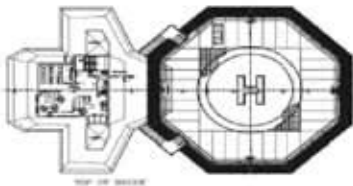
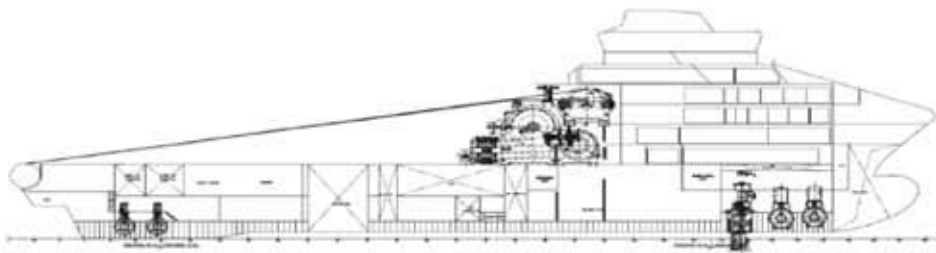
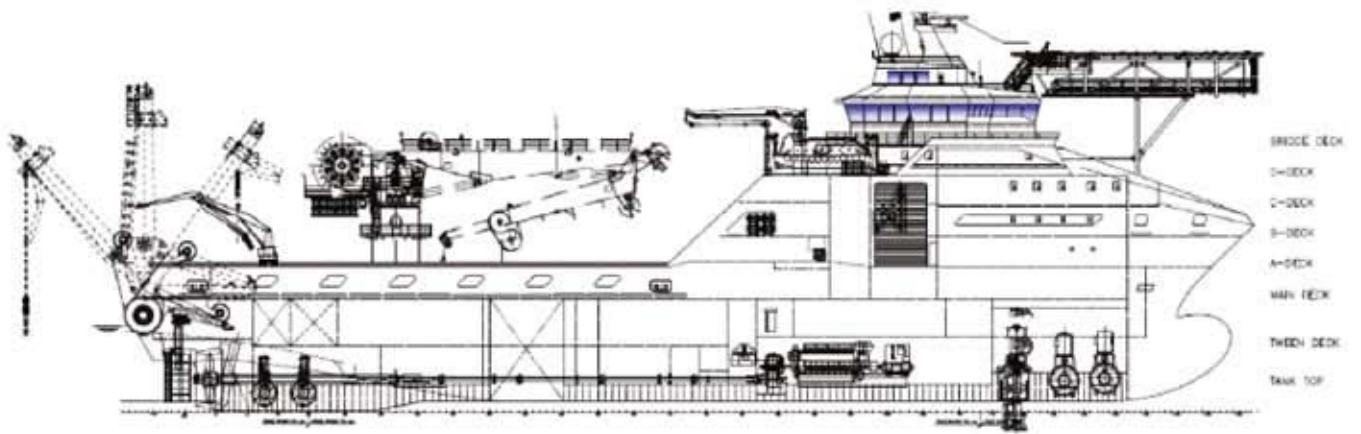
DOF Newbuildings

Project: AYP317



Aker AH 04 - AHTS

Aker AH 04



Aker AH 04

SPECIFICATIONS

Design:	Aker AH 04
Yard:	Aker Yards
LOA:	108.0 m
LPP:	99.0 m
Breadth:	24.0 m
DWT:	5 750 Ton
Max draft:	7.0 m (midship) 8.7 m (including skeg)
Main Engines	2 x 7 600 kW / 720 rpm.
Main Gears and Propellers:	Two off Main gears with vertical offset Two off Propellers with nozzle, Diameter: Approx. 4600 mm Max power each: 11.2 MW
Thrusters:	Two off Tunnel thruster forward, each 1 500 kW, el driven One off Retractable azimuth thruster forward 1 500 kW, el driven Two off Tunnel thrusters aft, each 1 200 kW, el. driven
Speed:	18 knots
Towing Anchor handling winch:	One off Towing Anchor handling winch with 500 tonnes capacity of water fall type, consisting of: Two off Declutch- able towing / work drums, diam. 1 500 / 3 750 mm Wire capacity: 6 700 m of 76 mm diam. Each. One off Anchor handling drum, diam. 3 500 / 5 400 mm Wire capacity: 18 700 m of 76 mm diam. Two non declutch- able cable lifters for 76 mm chain fitted one at each tow /work drum and two for 84 mm chain on the anchor handling drum. Spooling device Remote control incl. computer Two off chain pulling winches
Accommodation:	90 persons
Other features:	Roll reduction system, joystick, DP system, secondary winch, rope reel, stern roller, towing pin, ROV hanger, deck crane, helicopter deck, Moonpool (7.2 m x 7.2 m)

*For detailed version of specification, please contact DOF management AS