

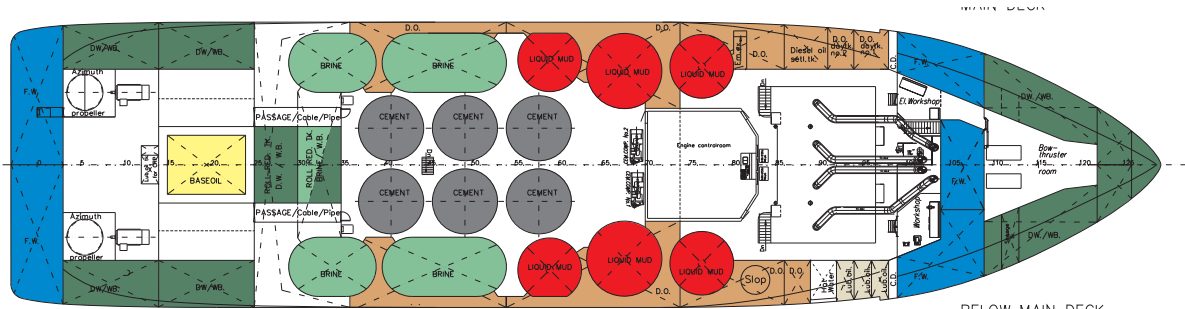


Design: MT 6000
Build: 2002
IMO No: 8912338

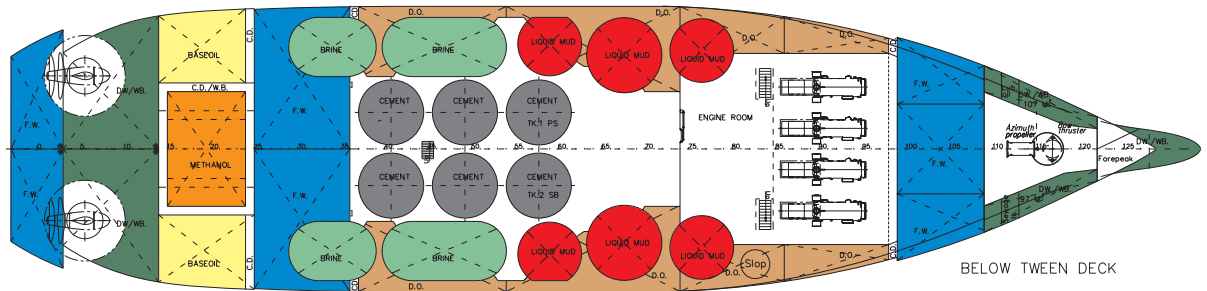
Skandi Buchan



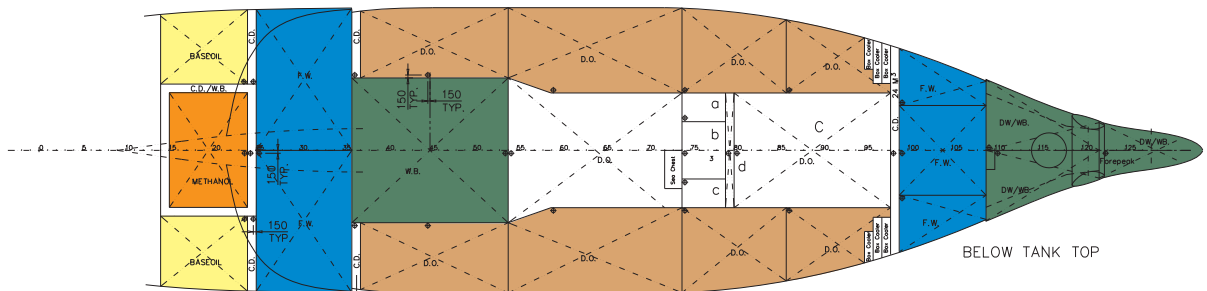
Skandi Buchan



BELOW MAIN DECK



BELOW TWEEN DECK



BELOW TANK TOP

Tank capacities

			Cargo							
			Cement	Mud	Fuel Oil	Fresh water	Base Oil	Brine	Drill Water	Metanol
Tank ID	Contents	Capacity (m ³)	2,400	2,500	0,900	1,000	0,900	2,500	1,000	1,000
Forepeak	DW/WB	149,6							149,6	
DB/wing	TK 2 Port	DW/WB							106,7	
DB/wing	TK 2 Stbd	DW/WB							96,8	
DB/wing	TK 3 Port	FW				125,2				
DB/Center	TK 3 Ctr	FW				236,3				
DB/wing	TK 3 Stbd	FW				136,3				
DB/wing	TK 4 Port	FO			69,4					
DB/Center	TK 4 Ctr	FO			135,8					
DB/wing	TK 4 Stbd	FO			80,8					
DB/wing	TK 5 Port	FO			115,8					
DB/wing	TK 5 Stbd	FO			104,3					
DB/wing	TK 6 Port	FO			173,5					
DB/Center	TK 6 Ctr	FO			92					
DB/wing	TK 6 Stbd	FO			173,5					
DB/wing	TK 7 Port	FO			111,9					
DB/Center	TK 7 Ctr	DW/WB							108,5	
DB/wing	TK 7 Stbd	FO			111,9					
DB/Center	TK 8 Port	FW				177,4				
DB/Center	TK 8 Stbd	FW				177,4				
DB/wing	TK 9 Port	BO					81			
DB/Center	TK 9 Ctr	MET								163,3
DB/wing	TK 9 Stbd	BO					81			
CENTER	TK 10 Port	MUD		236,2						
CENTER	TK 10 Stbd	MUD		243,7						
CENTER	TK 11 Port	MUD		341,2						
CENTER	TK 11 Stbd	MUD		341,2						
CENTER	TK 12 Port	MUD		235						
CENTER	TK 12 Stbd	MUD		235						
CENTER	TK 13 Port	BRI						507,5		
CENTER	TK 13 Stbd	BRI						507,5		
CENTER	TK 14 Port	BRI						300		
CENTER	TK 14 Stbd	BRI						300		
CENTER	TK 15 Roll Red	WB/BRI						184,5		
CENTER	TK 16 Roll Red	DW/WB							169	
DB/wing	TK 17 Port	DW/WB							118	
DB/wing	TK 17 Stbd	DW/WB							118	
DB/CENTER	TK 18 Port	FW				97,7				
DB/CENTER	TK 18 Stbd	FW				99,8				
CEMENT	TK 1 Port	CEM	158,6							
CEMENT	TK 2 Stbd	CEM	158,6							
CEMENT	TK 3 Port	CEM	158,6							
CEMENT	TK 4 Stbd	CEM	158,6							
CEMENT	TK 5 Port	CEM	158,6							
CEMENT	TK 5 Stbd	CEM	158,6							
CENTER	TK 27 Ctr	DW/WB							100,1	
CD/WB	Tk 38	DW/WB							110,2	
TOTAL WEIGHTS			952	1632	1169	1050	162	1800	1077	163
TOTAL CAPACITY (m³)			397	653	1299	1050	180	720	1077	163
TOTAL CAPACITY (Cu.ft.)			14002	23058	45866	37084	6357	25419	38030	5767

Ship service tanks

Contents	Capacity (m ³)
Bilgewater	10,6
Dirty oil	8,4
Fuel oil service tanks	72,0
Hot water	9,9
Luboil	31,0
Sewage	12,8
Slop	17,8
Sludge	10,6

All figures are based on a 100% tank volume
 Densities are estimated values and actual cargo
 densities may alter the above carrying capacities

Technical data

Skandi Buchan

GENERAL

Design	MT 6000
Built by / Year	Fitjar Mek. Verksted / 2002
Flag	Bahamas
Port of Registry	Nassau
Classification	+1A1, SF, LFL*, COMF-V(3), E0, DYNPOS AUT, CLEAN, DK(+), HL(2.8)

MAIN PARTICULARS

LOA	83.85 m
LBP	76.80 m
Breadth Moulded	19.70 m
Draught full load	6.00 m
D.W	4100 t
GRT	3360 GT
NRT	1249 NT

DECK CAPACITIES

Deck Area	57 m x 16 m (912 m ²)
Deck strength	5 t/m ²
Deck Cargo	3000 t cog - 1.634 o.d
Cargo rail	3.04 m + rail 1.4 m

DISCHARGE CAPACITIES

Fuel Oil	2 x Allweiler: 0-250 m ³ /h	lh: 105 m
Base oil	1 x Allweiler: 160 m ³ /h	lh: 105 m
Fresh water	2 x Allweiler: 0-150 m ³ /h	lh: 90 m
Drill water	2 x Allweiler: 0-250 m ³ /h	lh: 90 m
OBM	2 x Allweiler: 0-85 m ³ /h	lh: 105 m
	1 x Allweiler: 0-125 m ³ /h	lh: 105 m
Brine	2 x Allweiler: 100 m ³ /h	lh: 90 m
Methanol	2 x Allweiler: 75 m ³ /h	lh: 105 m
Dry Bulk	2 x Atlas Copco compr. cap 30	m ³ /min

DECK MACHINERY

Tugger winches	Aquamaster Rauma MW 100 E: 2 x 10 t
Mooring winches	Aquamaster Rauma MW 80 E: 2 x 10 t
Provision crane	ABAS KDE20 2 x SWL 3 t x 10 m
Lashing winches	Hydrakraft T 5 8 x SWL 5 t
Windlass	Aquamaster Rauma type MW100E AW 46K3
Anchors	2 x 3540 kg
Anchor chains	522.5 m / 46 mm / K 3
Mooring lines	4 x 180 m / 270 kn
Mooring wires	2 x 100 m

MACHINERY & PROPULSION

Main Engines	4 x Wärtsila 9L20LF, 1530kW, 900rpm.
AUX engines	1 x Volvo Penta TAMD162C, 1800rpm, 390kW.
Shaft Generators	ABB type AMG 630 S8 DBS BC, 1822kVA, 900rpm.
Main Propellers	Rolls Royce AQM CONTAZ 15/4750 - ABB 500L6L BAFMH, 2200kW, 1192rpm. (Diesel Electric).
Bow Thrusters	Tunnel: Brunvoll UF80TA 2000 - ABB AMA400L6L VAFMH, 1189rpm,
883kW	Azimuth: Rolls Royce AQM UL1201/4940 - ABB AMA400L4L BAFMH, 1786rpm, 883kW.

Technical data

Skandi Buchan

NAVIGATION AND COMMUNICATION EQUIPMENT

Radars	2 x Kelvin Hughes Nucleus 3 6000ARPA 3 x 10 cm (x - s band) m/ Interswitch
Gyrocompass	2 x SG Brown Meridian
Magnetic Compass	4054 Navipol 1 Magnetic compass
Autopilot	In Simrad SDP
E C D I S	1 x Kelvin Hughes Nucleus 3 5000 Ecdis
Direction Finder	NA
Joystick	Simrad
Echo Sounder	Skipper GDS 101
Speed Log	Consilium SAL-R1
Satnav GPS	Kelvin Hughes MX420/2 DGPS
Loran C	NA
D P system	S D P 701
Radio telephone	Husun 4000 serie 500W
Watchkeeping Receiver	NA
VHF	2 x Husum RT 4822, 2xRT 4722, 3x RT2048
Portable VHF	3 x Sailor 3110 Portable GMDSS VHF
UHF	2 x Motorola GM 360
Portable UHF	6 x GP 900 Ex
Emergency Beacon	Jotron TRON 40S EPIRB
Inmarsat C	2 x Husun 2095C Inmarsat-C
Inmarsat B	Husun 4400 (Class 2) Inmarsat-B
Radio tlx:	GMDSS acc.to class A 3 Ref. dual Sat-C

PERFORMANCE / CONSUMPTION

Full speed	16 knots - 22 m ³ /day
Service speed	12 knots - 12 m ³ /day
Economical Speed	10 knots - 9 m ³ /day
Stand-by	4 m ³ /day
DP Operation by rig	7 m ³ /day
In port	1 m ³ /day

ACCOMMODATION

Total Capacity	24 Persons
Officer Cabins	6 x 1 bed cabins
Crew Cabins	6 x 1 bed cabins
Passengers	6 x 2 men cabins
Lounges	Two fully equipped lounges with digital television (one for smokers)
Gymnasium	One fully equipped gymnasium
Hospital	Fully furnished hospital for 2 persons
Conference room	
Office	

CONTINGENCY EQUIPMENT

Lifeboats	1 x MP 741 springer. MOB - 15 persons
Life rafts	4 x 25 persons