

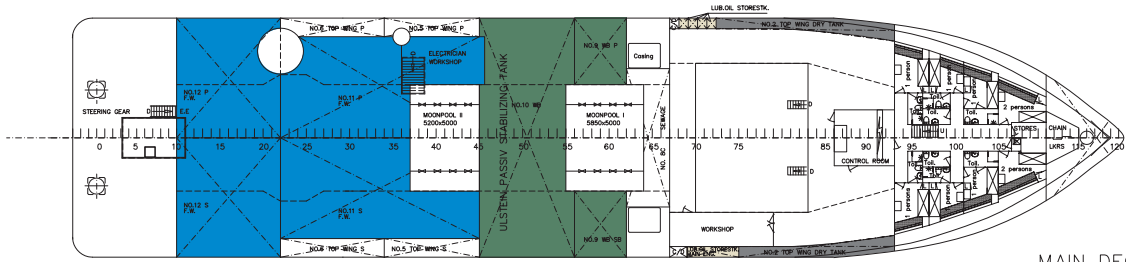
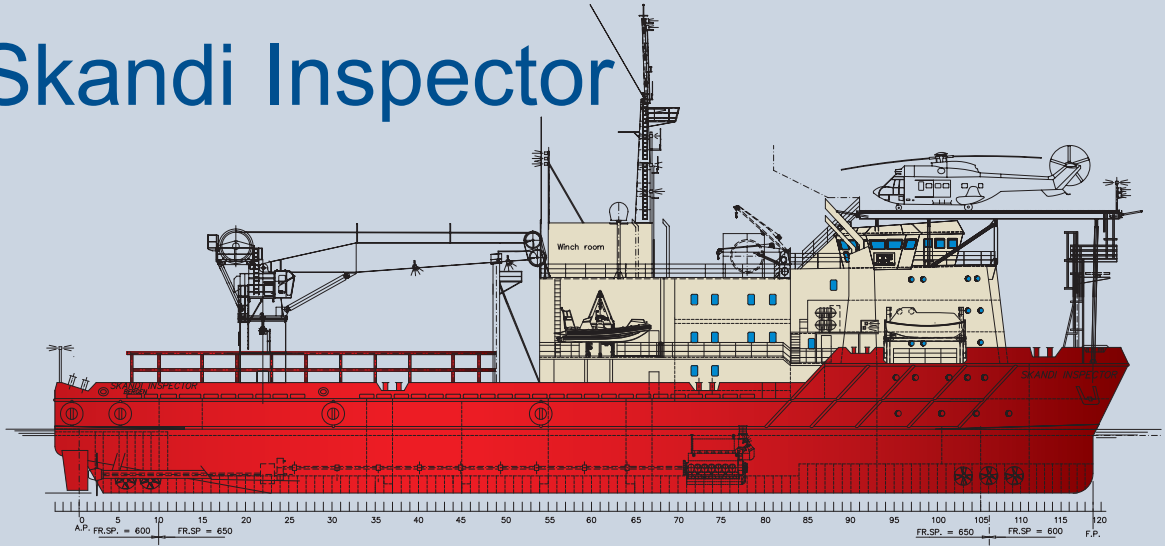


Design: TMV 4000
Build: 1999
IMO No: 7905285

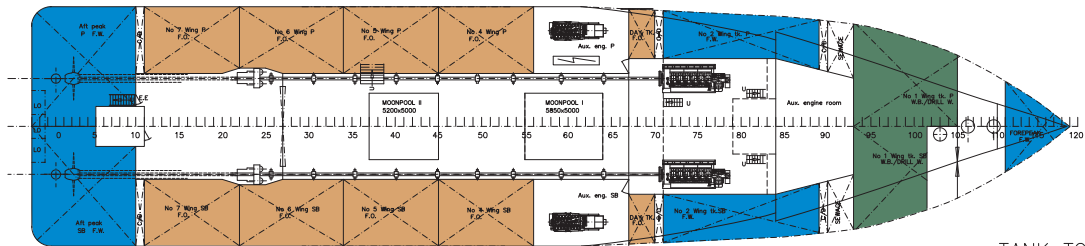
Skandi Inspector



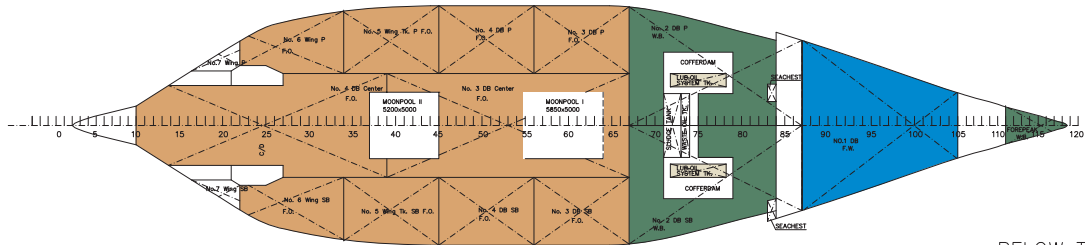
Skandi Inspector



MAIN DECK



TANK TOP



BELOW TANK TOP

Tank capacities

				Cargo		
Tank ID	Contents	Capacity (m ³)	Fuel Oil	Fresh water	Drill water	
			0,900	1,000	1,000	
DB	Tk 1	FW	159,64	159,6		
DB	Tk 3 Port	FO	43,49			
DB	Tk 3 Stbd	FO	43,49			
DB	Tk 4 Port	FO	44,43			
DB	TK 4 Stbd	FO	44,43			
DB	Tk 5 Port	FO	41,63			
DB	TK 5 Stbd	FO	41,63			
Wing	Tk 6 Port	FO	127,6			
Wing	Tk 6 Stbd	FO	127,6			
Wing	Tk 7 Port	FO	72,71			
Wing	Tk 7 Stbd	FO	72,71			
DB	Tk 3 Center	FO	124,34			
DB	Tk 4 Center	FO	139,79			
Wing	Tk 1 Port	DW/WB	77,71		77,7	
Wing	Tk 1 Stbd	DW/WB	96,87		96,8	
Wing	Tk 2 Port	FW	79,16	79,1		
Wing	Tk 2 Stbd	FW	79,16	79,1		
Wing	Tk 4 Port	FO	106,58			
Wing	Tk 4 Stbd	FO	106,58			
Wing	Tk 5 Port	FO	106,41			
Wing	Tk 5 Stbd	FO	106,41			
Aft Peak	Port	FW	71,44	71,4		
Aft Peak	Stbd	FW	71,44	71,4		
TOTAL WEIGHTS			1214	461	175	
TOTAL VOLUME			1350	461	175	
TOTAL CAPACITY (Cuft)			47669	16274	6165	

Ship service tanks

Contents	Capacity (m ³)
CD/WB	1546,0
Dirty oil	4,0
Fuel oil service tanks	46,0
Luboil	16,5
Sewage	73,1
Sludge	8,1

All figures are based on a 100% tank volume

Densities are estimated values and actual cargo densities may alter the above carrying capacities

Technical data

Skandi Inspector

GENERAL

Design	TMV 4000
Built by / Year	Ulstein Hatlø AS / 1979
Rebuilt	1999
Flag	Bahamas
Port of Registry	Nassau
Classification	+1A1, HELDK, E0, DYNPOS-AUTR

MAIN PARTICULARS

LOA	81.10 m
LBP	76.20 m
Breadth Moulded	18.00 m
Draught (full load)	4.97 m
DWT (at 5,25)	2419 t
GRT	3345 GT
NT	1003 NT

CARGO CAPACITIES

Deck Area	36m x 15 m (540 m ² included moon-pool)
Deck Strength	5 t/m ²
Deck Cargo	2800 t - 1.75 m above deck
Cargo Rail	3.02 m

DISCHARGE CAPACITIES

Fuel Oil	1 x 150 m ³ /h - 100 m wc 1 x 10 m ³ /h - 20 m wc
Fresh Water	1 x 100 m ³ /h - 80 m wc
Drill water	2 x 250/90 m ³ /h - 25/60 m wc

DECK MACHINERY

Tugger winch	2 x 5 t
Capstans	2 x 10 t
Provision crane	1 of 3 t / 5 m - 1 of 2 t / 8 m
Offshore deck crane	50 T 15 m - 35 T 21.2 m 500 metres of wire 10T 21.2 m - 330 metres of wire
Windlass	Hydraulik Brattvåg, Type MA8/3557
Anchors	2 x 2460 kg each stockless
Anchor chains	1 x 275/1 x 247.5 meter - 44 mm K2

Technical data

Skandi Inspector

MACHINERY & PROPULSION

Main engines	2 x 2407 BHP MAK Diesel
AUX engines	GM/Siemens 387 kVA + 305 kVA + 215 kVA
	2 x Cummins/Newage/genset each apx 1461 kVA
Shaft Generators	2 x Siemens 1500 kVA
Main Propellers	2 x Ulstein 2550 mm var. pitch.
Bow Thrusters	2 x Ulstein 750 HP var. pitch.
	1 x Brunvoll 880 HP var. pitch.
Stern Thrusters	2 x Ulstein 750 HP var. pitch.

NAVIGATION AND COMMUNICATION EQUIPMENT

DP System	Simrad SDP 21
Ref. Systems	DGPS; Taut wire, HIPAP, HRR418 with standard fixed head (160°/60°)
Radars	Kelvin Huges Nucleus 5000 ARPA 1 x 3 cm. Kelvin Huges HR 2000R Plath 2920/04, 3 x Robertson RPG90 Robertson AP9 MK3
Gyrocompass	Shipmate RS 4500B
Autopilot	Trimble Navigation NT 200 GPS
Decca Nav.	Ulstein universal control, also bridge wing
Satellite Navigator	Simrad EN
Joy-stick	Galatee Ben
Echo Sounder	JRC – 45 A MK II
Speed Log	2 x Skanti MF/HF 400 W
Inmarsat A	Delcom DC 300 D
Radio telephone	2 x 25 W Sailor + 25 W Skanti TRP 2500
Watchkeeping Receiver	6 x Motorola + 3 x Tron
VHF	Decon DC 22, Jotron Tron – 1C
Portable VHF	Sait ARQ Equipment Type H 5111 TP
Emergency Beacon	SKANTI SR 6503 (Sell call nr. 32765)
Telex	2 x Tron Start
Sell call	acc. to rules area A3
Radar Transponder	Seatel
GMDSS	
Satellite TV	
Inmarsat B	

PERFORMANCE

Full speed	12 knots - 15 m ³ /day
Service speed	10,5 knots - 12 m ³ /day
Economical Speed	10,5 knots - 12 m ³ /day
Stand-by	8 m ³ /day
DP Operation by rig	10 m ³ /day
In port	2 m ³ /day

Technical data

Skandi Inspector

ACCOMMODATION

Total Capacity	63 persons
Singel Cabins	17 x 1 bed
Double Cabins	23 x 2 beds
Lounges	Two fully equipped lounges with digital television and DVD
Hospital	Fully furnished hospital for 1 person
Conference Room	1 x 4.8m x 2.8m

CONTINGENCY EQUIPMENT

Life rafts	2+2 Viking 25 persons and 1+1 Viking 20 persons
MOB boat	one stb side, MP741 Springer – 200 hp
Lifeboats	Harding Covered 2 x 20 persons

HELIDECK

Size	19m x 19m Octagonal
Aircraft Type	Super Puma

ROV FACILITIES

Moon-pool	5 m x 5.2 m 5.85 m x 5 m (in hangar)
Electrical Power	250kVA, 3 x outlets on main deck
On-line Survey	1 x 7.2m x 5.1m
Off-Line Survey	1 x 8.1m x 4.5m
Client Office	1 x 3.3m x 2.5m