

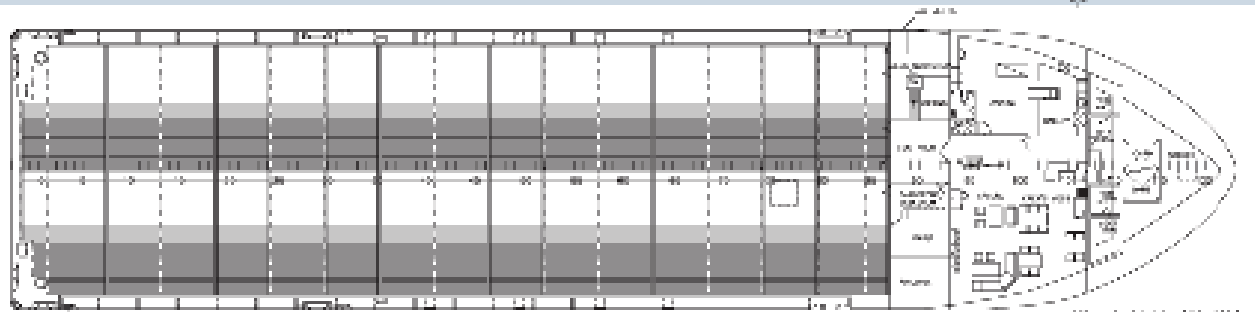
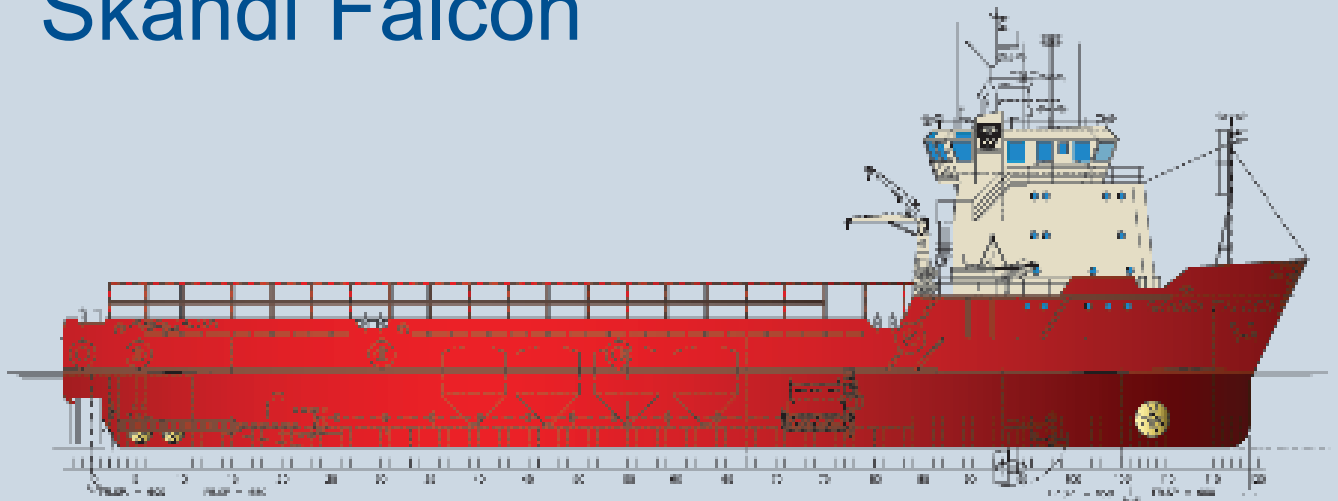


**Design:** UT 705  
**Built:** 1990  
**IMO No:** 8912338

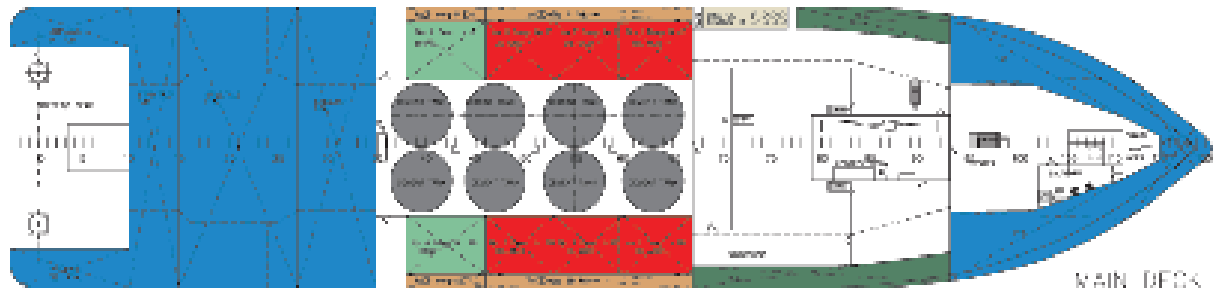
# Skandi Falcon



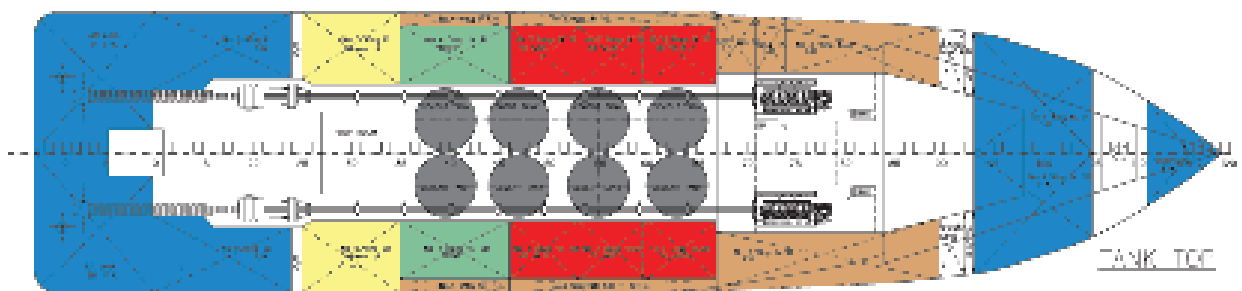
# Skandi Falcon



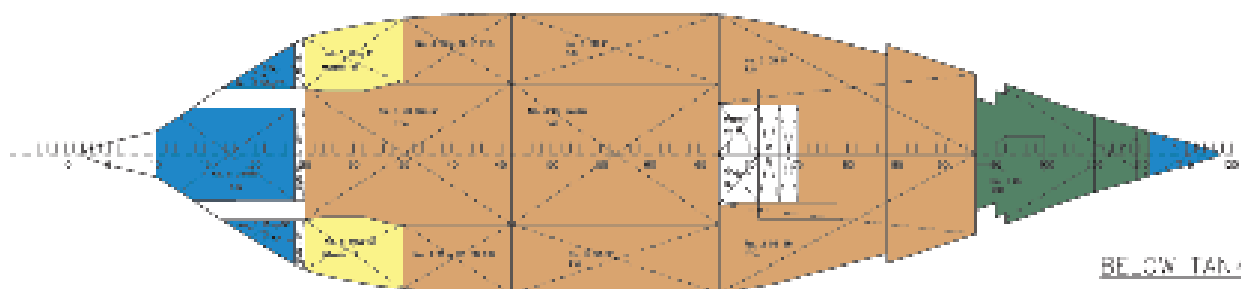
SH-DECK BECK



MAIN DECK



TANK TOP



BELOW TANK TOP

\*Not to scale

# Tank capacities

Tank ID	Contents	Capacity (m <sup>3</sup> )	Cargo						
			Cement	Mud	Fuel Oil	Fresh water	Base Oil	Brine	Drill Water
			<b>2,100</b>	<b>2,500</b>	<b>0,830</b>	<b>1,000</b>	<b>0,900</b>	<b>2,500</b>	<b>1,000</b>
Forepeak	FW	43,8				43,8			
DB Tk 1	WB/DW	78,2							78,2
DB TK 2 Port	FO	130			107,9				
DB TK 2 Stbd	FO	130,5			108,3				
DB TK 3 Port	FO	62,4			51,7				
DB TK 3 Ctr	FO	144,2			119,6				
DB TK 3 Stbd	FO	63,4			52,6				
DB TK 4 Ctr	FO	137,9			114,4				
DB TK 5 Ctr	FW	48,7				48,7			
Wing Tk 1 Port	FW	61,6				61,6			
Wing Tk 1 Stbd	FW	61,6				61,6			
Wing Tk 2 Port	FO	65,4			54,2				
Wing Tk 2 Stbd	FO	108,9			90,3				
Wing Tk 3 Port	FO	69,1			57,3				
Wing TK 3 Stbd	FO	69,1			57,3				
Wing Tk 4 Port	FO	63,3			52,5				
Wing Tk 4 Stbd	FO	63,3			52,5				
Wing Tk 5 Port	BO	108,1					97,2		
Wing Tk 5 Stbd	BO	108,1					97,2		
Wing Tk 6 Port	FW	89,6				89,6			
Tk 6 Stbd	FW	89,6				89,6			
Top wing Tk 1 Port	FW	53,5				53,5			
Top wing Tk 1 Stbd	FW	53,5				53,5			
Top wing Tk 2 Port	WB/DW	34,8							34,8
Top wing TK 2 Stbd	WB/DW	59,6							59,6
Stab tk	WB/DW	249,7							249,7
Stab tk	WB/DW	374,5							374,5
Stab tk	WB/DW	155,9							155,9
Deep tk Tk 1 Port	MUD	100,4		251					
Deep tk Tk 1 Stbd	MUD	100,4		251					
Deep tk Tk 2 Port	MUD	100,4		251					
Deep tk Tk 2 Stbd	MUD	100,4		251					
Deep tk Tk 3 Port	MUD	100,4		251					
Deep tk Tk 3 Stbd	MUD	100,4		251					
Deep tk tk 4 Port	BRI	138,1						345,2	
Deep tk tk 4 Stbd	BRI	138,1						345,2	
After Peak Port	FW	117,9				117,9			
After Peak Stbd	FW	117,9				117,9			
Center	CEM	49,5	103,9						
Center	CEM	49,5	103,9						
Center	CEM	49,5	103,9						
Center	CEM	49,5	103,9						
Center	CEM	49,5	103,9						
Center	CEM	49,5	103,9						
Center	CEM	49,5	103,9						
Center	CEM	49,5	103,9						
Center	CEM	49,5	103,9						
	<b>TOTAL WEIGHTS (mt)</b>		<b>953</b>	<b>1506</b>	<b>919</b>	<b>738</b>	<b>194</b>	<b>690</b>	<b>831</b>
	<b>TOTAL CAPACITY (m<sup>3</sup>)</b>		<b>953</b>	<b>602</b>	<b>1107</b>	<b>738</b>	<b>216</b>	<b>276</b>	<b>396</b>
	<b>TOTAL CAPACITY (Cu.ft.)</b>		<b>33644</b>	<b>21274</b>	<b>39084</b>	<b>26052</b>	<b>7628</b>	<b>9752</b>	<b>13978</b>

## Ship service tanks

Contents	Capacity (m <sup>3</sup> )
Bilgewater	10,3
Dirty oil	9,9
Fuel oil service tanks	36,7
Luboil	16,2
Sewage	18,4
Sludge	9,9

All figures are based on a 100% tank volume

# Technical data

Skandi Falcon

## GENERAL

Design	UT 705
Built by / Year	Brattvaag Yard / 1990
Flag	Norwegian
Port of Registry	Bergen
Classification	✱1A1, SF, E0 DNV DYNPOS AUT

## MAIN PARTICULARS

LOA	81,90 m
LBP	76,20 m
Breadth Moulded	18,00 m
Draught full load	4,98 m (summer)
Dept to shelter deck	7,10 m
D.W (at 5,00)	3100 t
GRT	2637 int./1458 nat.
Net Tonnage	791 t

## DECK CAPACITIES

Deck Area	54,5 x 15,5 (844 m <sup>2</sup> )
Deck strength	5t/m <sup>2</sup>
Deck Cargo	2.500 t
Cargo rail	3,00 m
Bulwark height	1,10 m

## DISCHARGE CAPACITIES

Fuel Oil	250 m <sup>3</sup> / h, 90m WC
Base oil	100 m <sup>3</sup> / h, 90m WC
Fresh water	250 m <sup>3</sup> / h, 90m WC
Drill water	250 m <sup>3</sup> / h, 90m WC
OBM	2x 75 m <sup>3</sup> / h, 180m WC
Brine	100 m <sup>3</sup> / h, 90m WC (max 200 m WC)
Dry bulk	2 x 18,4m <sup>3</sup> / min. 5,6 bar Ing. Rand.
Discharge lines	5" dia, multiple 5" WECO

## DECK MACHINERY

Tugger Winch	2 x 9,5 t Norwinch
Capstans	2 x 10 t Norwinch
Provision cranes	SB 1 of 5 t / 8 m P 1 of 1 t / 6 m
Windlass	Norwinch with 2 drums
Anchors	3 of 2.460 kg each
Anchor chains	SB Anchor 9 shackles (247 m) - 40mm - K3 P Anchor 7 shackles (192 m) - 40mm - K 3

# Technical data

Skandi Falcon

## MACHINERY & PROPULSION

Main Engines	2 x Bergen Diesel, tot. 6.600 BHP
AUX engines	2 x 320 kW Caterpillar 3.406
Shaft Generators	2 x 1.680 kW (2.100 kVA)
Main Propellers	2 x Ulstein var. pitch. 4 blades each
Bow Thrusters	1 x Ulstein var. pitch 1000 BHP
	1 x Ulstein azimuth 1000 BHP
Stern Thrusters	2 x Ulstein var. pitch 800 BHP each
Emergency generator	25 kW 230 V
Current	440 V / 220 V- 60 cycles

## NAVIGATION AND COMMUNICATION EQUIPMENT

Radars:	1 x 10 cm, Atlas 8.600 ARPA
	1 x 3 cm, Atlas 5.600 AC/TM
Magnetic Compass	BN 35 PN
Gyrocompass	Anschuts ST 14
Autopilot	Anschuts Nautopilot 1600
Satellite Navigator	GPS Koden KGP/98
Joy-stick	Ulstein universal control, also bridge wing
Echo Sonder	Skipper ED 161
Speed Log	Sagem
Radio telephone	Sailor MF/HF 400 W
Watchkeeping Receiver	Sailor R 501
VHF	1 x Sailor RT 2047 D
	1 x Sailor RT 2047
	1 x Sailor RT 2048 S
Portable VHF	3 x Jotron
	2 x Icom
	2 x Motorola
Emergency Beacon	2 x Jotron
Inmarsat C	Galaxy 425711110
Inmarsat C	Sailor 425711120
Inmarsat C	Sailor 425711130
GMDSS	2 x Sailor VHF DSC RM 2042
	1 x Sailor HF SSB DSC Watchreceiver RM 2150

## PERFORMANCE

Full speed	13 knots - 22 m <sup>3</sup> /day
Service speed	12 knots - 12 m <sup>3</sup> /day
Economical Speed	12 knots - 12 m <sup>3</sup> /day
Stand-by	3,0 m <sup>3</sup> /day
DP Operation by rig	4,8 m <sup>3</sup> /day
In port	0,8 m <sup>3</sup> /day

## ACCOMMODATION

Total Capacity	23
Officers and Crew	11
Passengers	12 men
Lounges	One fully equipped lounge with digital television and DVD
Hospital	1

## CONTINGENCY EQUIPMENT

Liferafts	According to Norwegian regulations
-----------	------------------------------------



DOF Platform Supply Vessel



Skandi Falcon IMO: 8912338

All specifications are subject to changes without prior notice. Please contact us for details and verification.

[www.dof.no](http://www.dof.no)

[www.dofman.no](http://www.dofman.no) | [www.dofsubsea.no](http://www.dofsubsea.no)

produce by DOF Management AS