



# AHITS



## Skandi Saigon

Anchor Handling Tug Supply Vessel

# Introduction



The Skandi Saigon is a new generation high powered anchor handling vessel designed for field installation operations across a wide range of water depths and environmental conditions.

## Quick View

Overall length	75.0m
Length between pp	68.0m
Breadth	17.4m
Depth	8.5m
Draft	7.0m
Speed	15.0 knots
Bollard Pull	196 t
Deck Area	550 m <sup>2</sup>

## General Description

Name	Skandi Saigon
Type	AHTS
Owner	Aker DOF Deepwater AS
Class	1A1, Tug, Fi-fi I+II, Oil Rec, SF, COMF-V(3), E0, DYNPOS-AUTR, NAUT-OSV(A), CLEAN DESIGN, DK(+), HL(2.8), TMON
Design	STX AH08
Year Built	2011
IMO No.	9447641



# Skandi Saigon

## Anchor Handling Tug Supply Vessel

All specifications are subject to changes without prior Notice. Please contact us for details and verifications.

# Technical Specification



## Main Dimensions

Overall length	75.0m
Length between pp	68.0m
Breadth	17.4m
Depth	8.5m
Draft	7.0m

## Power and Propulsion

Main engines: Rolls Royce Bergen (16300 BHP)	2 x 6000kW
Bollard pull	196t
Main generators	2 x 370kW
Shaft generators	2 x 2400kW
Tunnel trusters	4 x 880kw

## Cranes

Deck crane 1	1 x Straight boom 5t - 10m/3.2t - 15m
Deck crane 2	1 x Cargo rail crane 3t - 12m

## Speed

Trial	15 knots
-------	----------

## Accommodation

27 persons

## Winches

1 x Brattvaag towing/anchor handling winch of waterfall type SL350W/BSL350W  
Secondary: Brattvaag ALM 63130  
AH:  
1 x declutchable anchor handling drum and dividing flanges for special compartment.

1050mm dia x 2850 dia x 3450 length + 900 mm comp.  
Wire Capacity main drum: 3400m of 76 mm dia full drum .  
Wire Capacity compartement: 800m of 76 mm dia

Towing:  
1x declutchable towing drum and dividing flanges for special compartemen

1050mm dia x 2850 dia x 3450 length + 900 mm comp.  
Wire Capacity main drum: 3400m of 76 mm dia full drum .  
Wire Capacity compartement: 800m of 76 mm dia

Secondary Winch  
One fixed drum with band brake, centre dividing flange and dividing flange for special coompartments in each side.

Capacity 2 x 800m of 203 mm dia rope

## Dynamic Positioning System

Kongsberg DP 2 System

Additional interface for:

Main propellers

Tunnel thruster

Vessel's power system for black-out/overload prevention

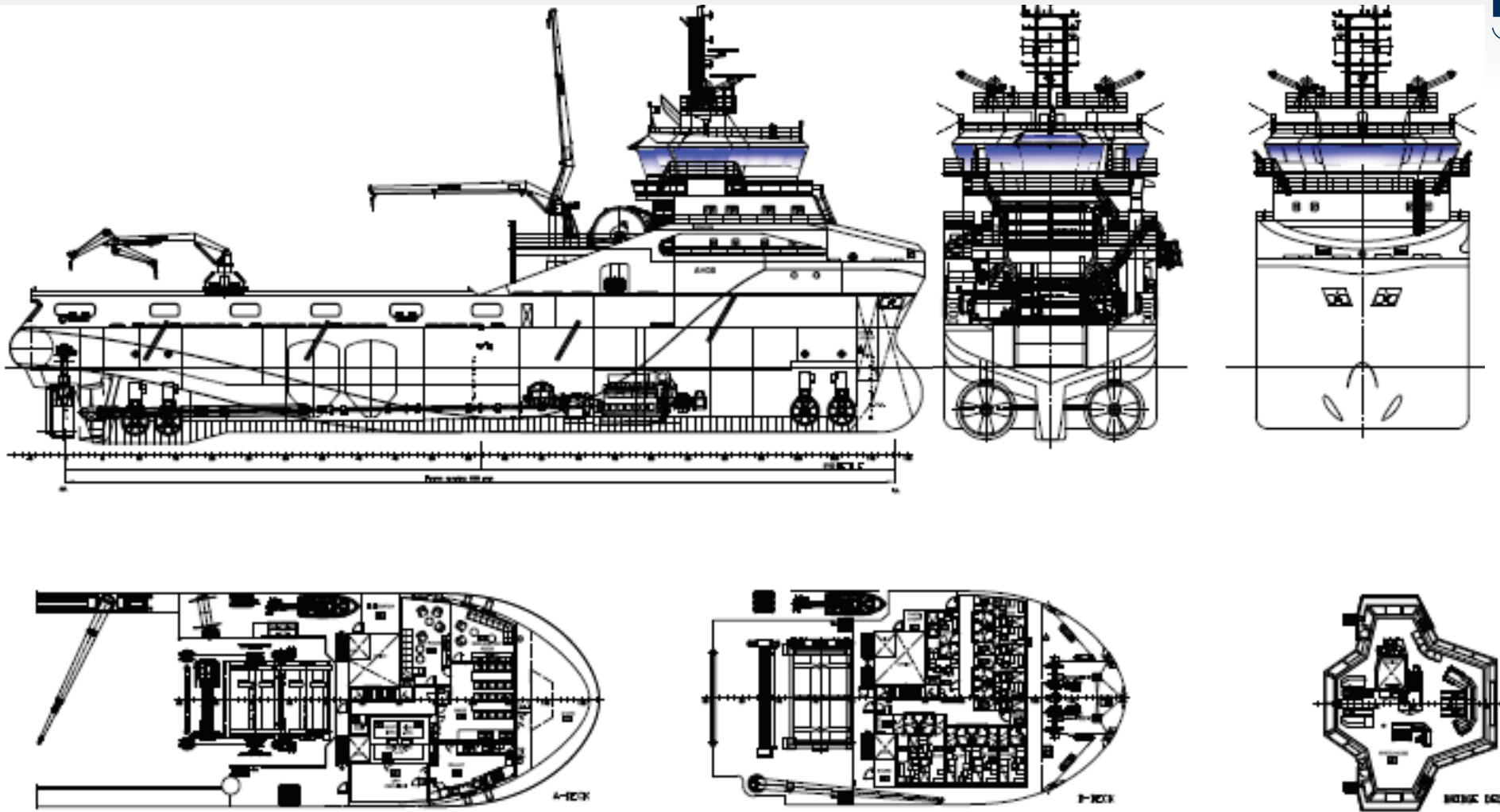


**Skandi Saigon**

Anchor Handling Tug Supply Vessel

All specifications are subject to changes without prior Notice. Please contact us for details and verifications.

# General Arrangement



**Skandi Saigon**

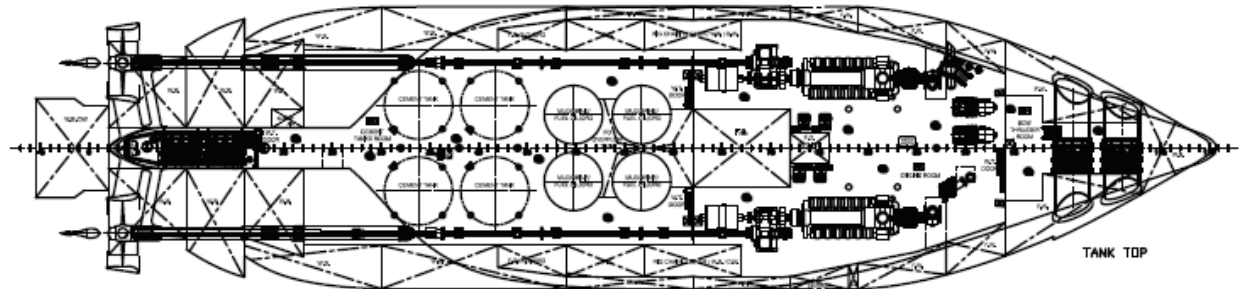
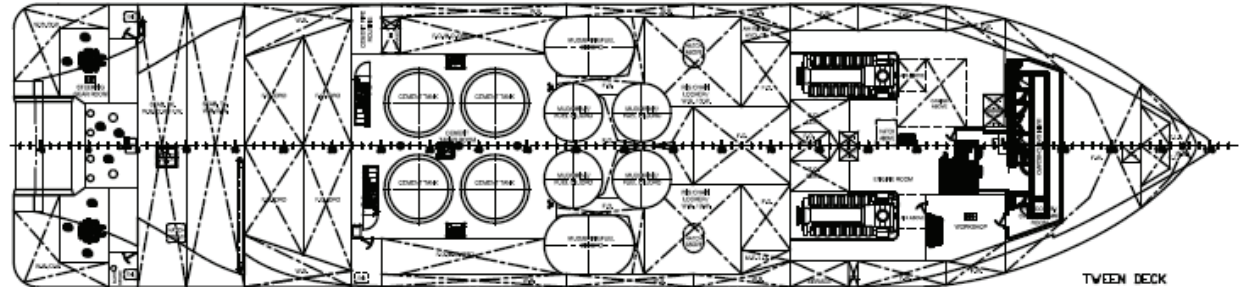
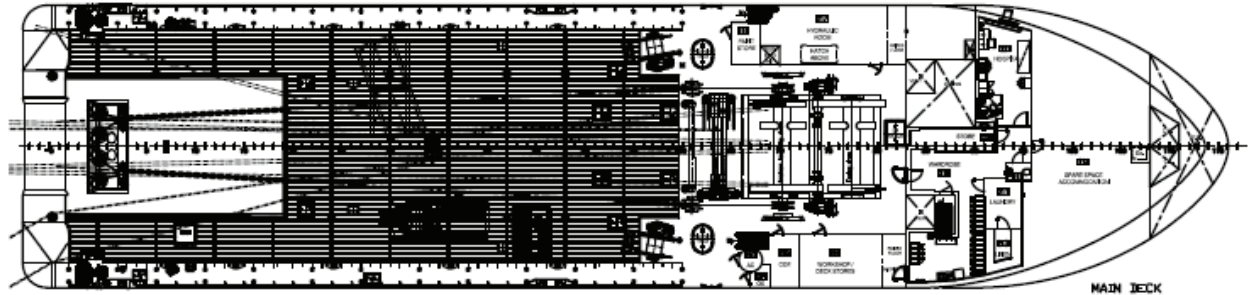
Anchor Handling Tug Supply Vessel

All specifications are subject to changes without prior Notice. Please contact us for details and verifications.

# Capacities



Main deck area	550m <sup>2</sup>
Max Deadweight	3173,1t
Marine diesel	1700m <sup>3</sup>
Fresh water	642m <sup>3</sup>
Ballast water	2020m <sup>3</sup>
Deck Cargo 1m above deck	1000 t
Liquid mud	460 m <sup>3</sup>
Rig chain	2x 150m <sup>3</sup>
Dry bulk	260m <sup>3</sup>



All figures are based on a 100% tank volume.  
Densities are estimated values and actual cargo densities may alter the above carrying capacities.



**Skandi Saigon**

Anchor Handling Tug Supply Vessel

All specifications are subject to changes without prior Notice. Please contact us for details and verifications.

# Contacts



If you would like further information or would like to contact us about our services or equipment, please

visit our website:

[www.dof.no](http://www.dof.no)

or

Call one of our regional offices:

Norway +47 5618 1000

Brazil +55 22 2105 5700

UK +44 1224 586 644

Singapore +65 6561 2780



**Skandi Saigon**

Anchor Handling Tug Supply Vessel

All specifications are subject to changes without prior Notice. Please contact us for details and verifications.