



AHTS



Skandi Atlantic

Anchor Handling Tug Supply Vessel

Introduction



The Skandi Atlantic is a new generation high powered anchor handling vessel designed for field installation operations across a wide range of water depths and environmental conditions.

Quick View

Overall length	75.0m
Length between pp	68.0m
Breadth	17.4m
Depth	8.5m
Draft	7.0m
Speed	15.0 knots
Bollard Pull	~Above 180 t
Deck Area	550 m ²

General Description

Name	Skandi Atlantic
Type	AHTS
Owner	Aker DOF Deepwater AS
Class	1A1, Tug, Fi-fi I+II, Oilrec, SF, COMF-V(3), E0, DYNPOS-AUTR, NAUT-OSV(A), CLEAN DESIGN, DK(+), HL(2.8), TMON
NOFO	NOFO 2005
Design	STX AH08
Year Built	2011
IMO No.	9447665



Skandi Atlantic Anchor Handling Tug Supply Vessel

All specifications are subject to changes without prior Notice. Please contact us for details and verifications.

Technical Specification



Main Dimensions

Overall length	75.0m
Length between pp	68.0m
Breadth	17.4m
Depth	8.5m
Draft	7.0m

Winches

1 x Brattvaag towing/anchor handling winch of waterfall type SL350W/BSL350W
Secondary: Brattvaag ALM 63130
AH:
1 x declutchable anchor handling drum and dividing flanges for special compartment.

Dynamic Positioning System

Kongsberg DP 2 System

Power and Propulsion

Main engines: Rolls Royce Bergen (16300 BHP)	2 x 6000kW
Bollard pull	180t +
Main generators	2 x 370kW
Shaft generators	2 x 2400kW
Tunnel trusters	4 x 880kW

1050mm dia x 2850 dia x 3450 length + 900 mm comp.
Wire Capacity main drum: 3400m of 76 mm dia full drum .
Wire Capacity compartement: 800m of 76 mm dia

Towing:
1x declutchable towing drum and dividing flanges for special compartemen

Cranes

Deck crane 1	1 x Straight boom 5t - 10m/3.2t - 15m
Deck crane 2	1 x Cargo rail crane 3t - 12m

1050mm dia x 2850 dia x 3450 length + 900 mm comp.
Wire Capacity main drum: 3400m of 76 mm dia full drum .
Wire Capacity compartement: 800m of 76 mm dia

Speed

Trial	15 knots
-------	----------

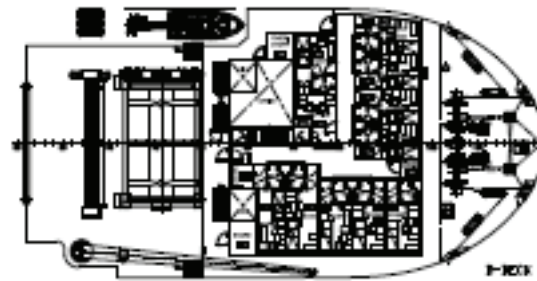
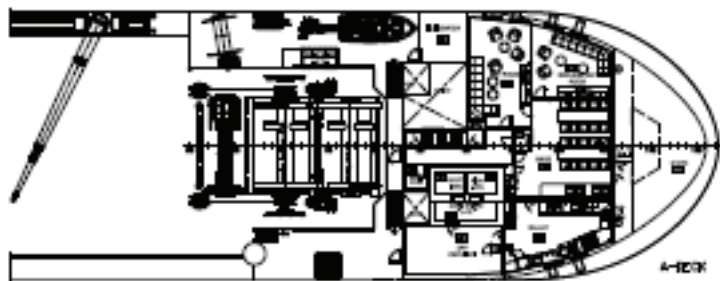
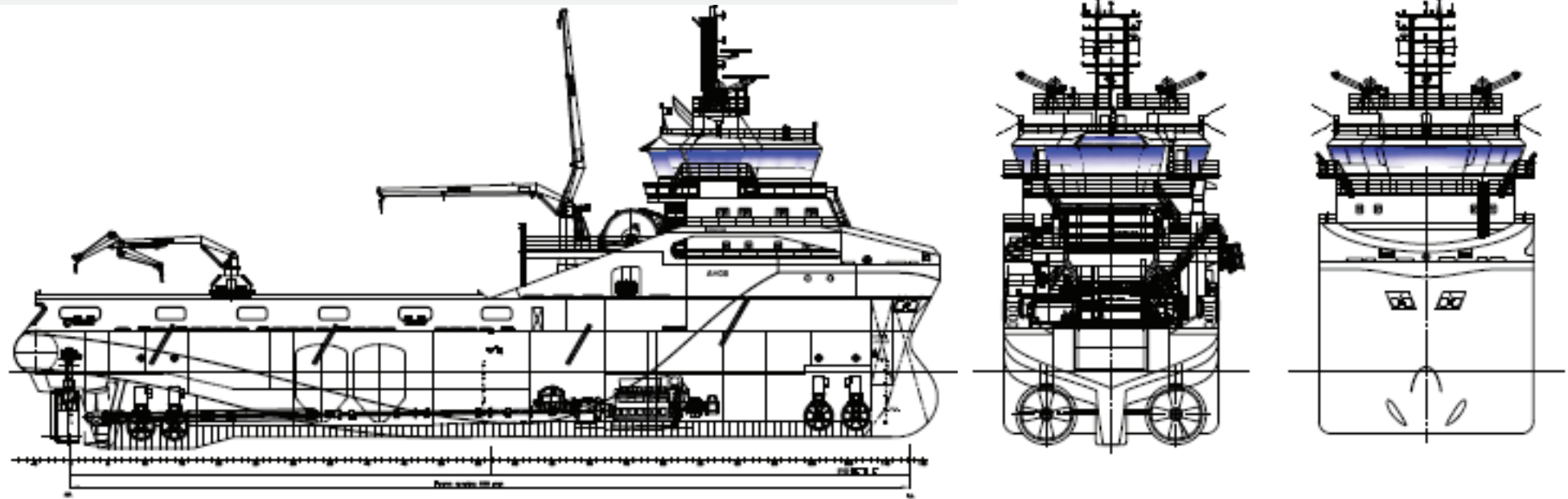
Secondary Winch
One fixed drum with band brake, centre dividing flange and dividing flange for special coompartments in each side.

Accommodation

27 persons	Capacity 2 x 800m of 203 mm dia rope
------------	--------------------------------------



General Arrangement



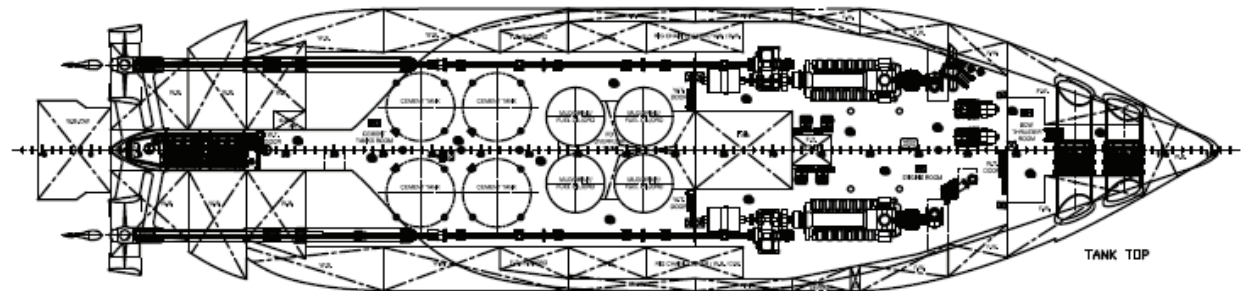
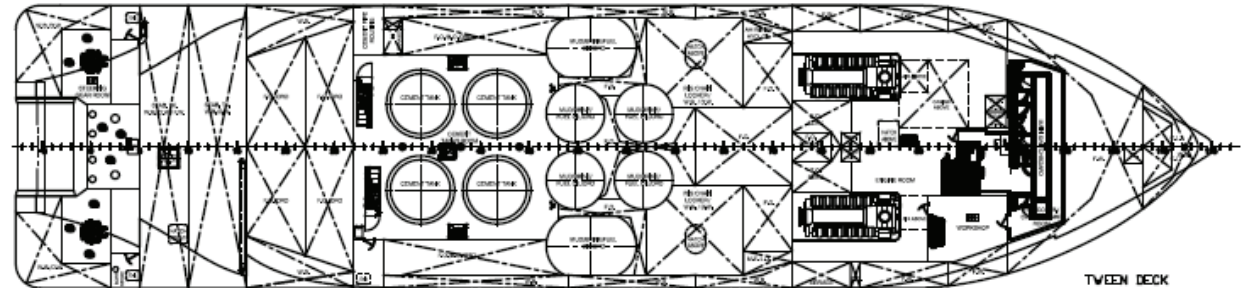
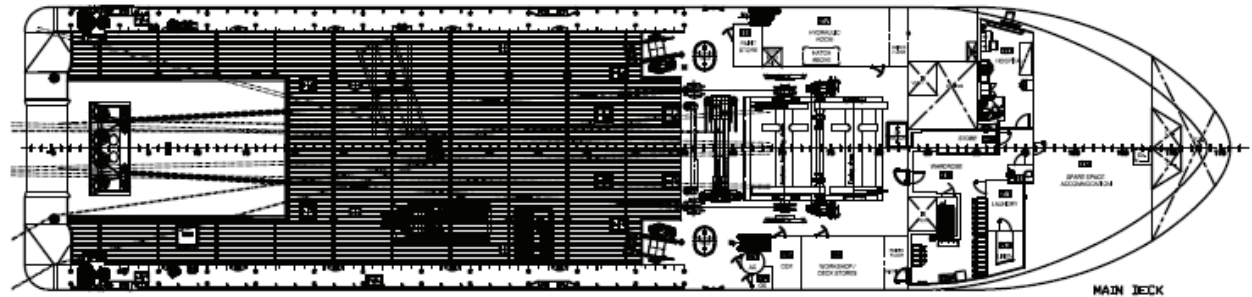
Skandi Atlantic Anchor Handling Tug Supply Vessel

All specifications are subject to changes without prior Notice. Please contact us for details and verifications.

Capacities



Main deck area	550m ²
Max Deadweight	3000t
Marine diesel	1700m ³
Fresh water	620m ³
Ballast water	1550m ³
Deck Cargo 1m above deck	1000 t
Liquid mud	460 m ³
Rig chain	2x 150m ³
Dry bulk	260m ³



All figures are based on a 100% tank volume.
Densities are estimated values and actual cargo densities may alter the above carrying capacities.



Skandi Atlantic Anchor Handling Tug Supply Vessel

All specifications are subject to changes without prior Notice. Please contact us for details and verifications.

Contacts



If you would like further information or would like to contact us about our services or equipment, please

visit our website:

www.dof.no

or

Call one of our regional offices:

Norway +47 5618 1000

Brazil +55 22 2105 5700

UK +44 1224 586 644

Singapore +65 6561 2780



Skandi Atlantic Anchor Handling Tug Supply Vessel

All specifications are subject to changes without prior Notice. Please contact us for details and verifications.